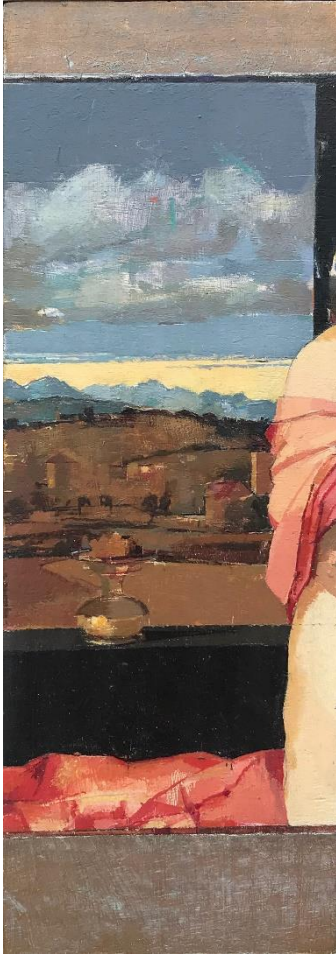
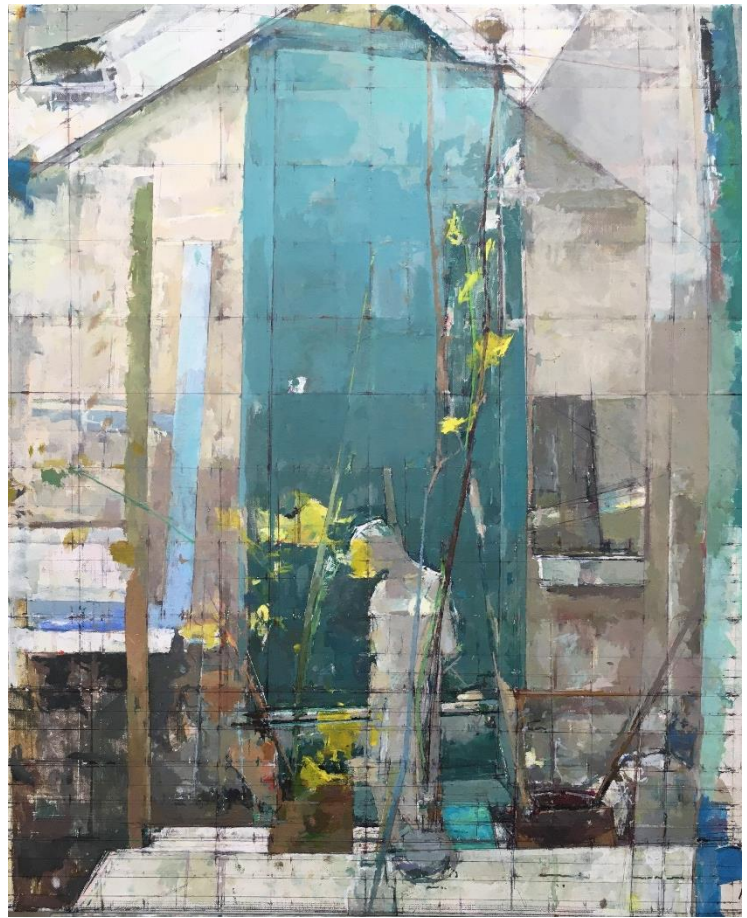


Suggested materials and equipment for travel workshop

Mark Dunford and Kay Vinson



Mark Dunford
after Bellini – 'girl with mirror' - oil on panel



Kay Vinson
Interior with Boy – oil on canvas

If you have your own preferences for materials, then please continue to use what you have. Artists develop their own methods and materials over time to suit their intentions.

Please remember that you are travelling and will be carrying your equipment and transporting 'wet' paintings – keep it simple.

Drawing

pencils, charcoal, ink pens (your preference), eraser, sharpener, etc.

Drawing equipment

lightweight drawing board, straight edge (min 30 cm, could be card), masking tape or clips, string, cotton with weight/plumb bob, set square.

Surfaces – select dependent on your medium

sheets of paper (cartridge/watercolour/prepared), sketchbook, panels, painting paper, primed canvas (your preference, please consider your pace and how prolific you want to be).

Paint

oil, watercolour, gouache or acrylic (your preference) - artists' quality paint will contain more pigment and less binder and have stronger tinting qualities. Our workshops will mainly focus on drawing, 'sighting', composition, tone, colour observation but we will be happy to show ways of using materials dependent upon your choice of painting media.

suggested basic colour palette:

- cadmium yellow
- lemon yellow (or cadmium lemon)
- yellow ochre
- cadmium orange
- alizarin crimson (or crimson)
- cadmium red
- ultramarine blue
- viridian
- cobalt blue
- burnt umber
- titanium white - larger tube is recommended

suggested extended colour palette:

- naples yellow
- indian yellow
- winsor green or cadmium green
- raw umber
- permanent rose
- cadmium scarlet
- black (pêche noir, or blue black or lamp black)

Please omit or include any personal preferences.

Painting tools

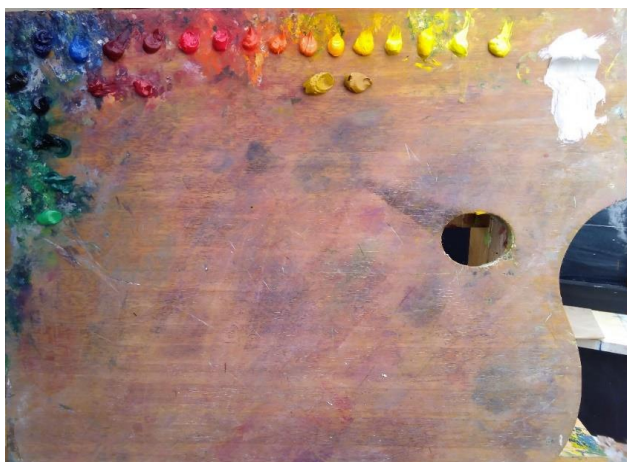
Suitable bag, range of various brushes (preference) palette knife, palette, cotton buds, thinner/water container.
Odourless solvent is supplied.

Painting upright support

Lightweight easel or strapped drawing surface or simply sitting down with a pochade box (U GO) – your choice

Sun Protection

Hat with brim to allow for vision.



Mark Dunford's palette

Left bottom to top: permanent green, viridian, Winsor green, quinacridone blue, Aegean blue
Top row left to right: ultramarine, cobalt blue, alizarin crimson, crimson lake, cadmium scarlet,
cadmium red, Winsor orange, cadmium orange, cad. yellow deep, cad. yellow (W&N), Winsor yellow, cad.
yellow (MH) cad lemon light, lemon yellow, titanium white
Lower row left to right: ultramarine, cobalt blue, alizarin crimson, crimson lake, cadmium
scarlet, cadmium red, Winsor orange, cadmium orange, cad. yellow deep, cad. yellow (W&N),
Winsor yellow, cad. yellow (MH) cad lemon light, lemon yellow, titanium white



Kay Vinson's palette (see over for colours)

