

**WINSLOW**  
**ART CENTER**

**YANA BEYLINSON**

**SCALING UP**

**MASTERING LARGE-SCALE FLORAL PAINTINGS**

# The Beauty and Challenge of Working Large

Embracing the grand scale demands courage and resilience. It opens up a lot of challenges where the risk of failure looms large. Every stroke amplifies, exposing vulnerabilities and uncertainties.

Yet, here lies a chance for tremendous transformation and upleveling. It tests one's mettle, forging a path toward mastery and evolution. Each hurdle navigated births profound growth, refining both skill and spirit."

"A large canvas demands big ideas." - John La Farge

"In large scale paintings, the artist's hand becomes a conductor orchestrating a symphony of color and form." - Unknown

"Scaling up a painting is like opening a window to another dimension." - Unknown

"I decided that if I could paint a flower on a huge scale, you could not ignore its beauty..." Georgia O'Keeffe



Georgia O'Keeffe



Gerhard Richter



Mark Rothko

# Reference: Your Roadmap

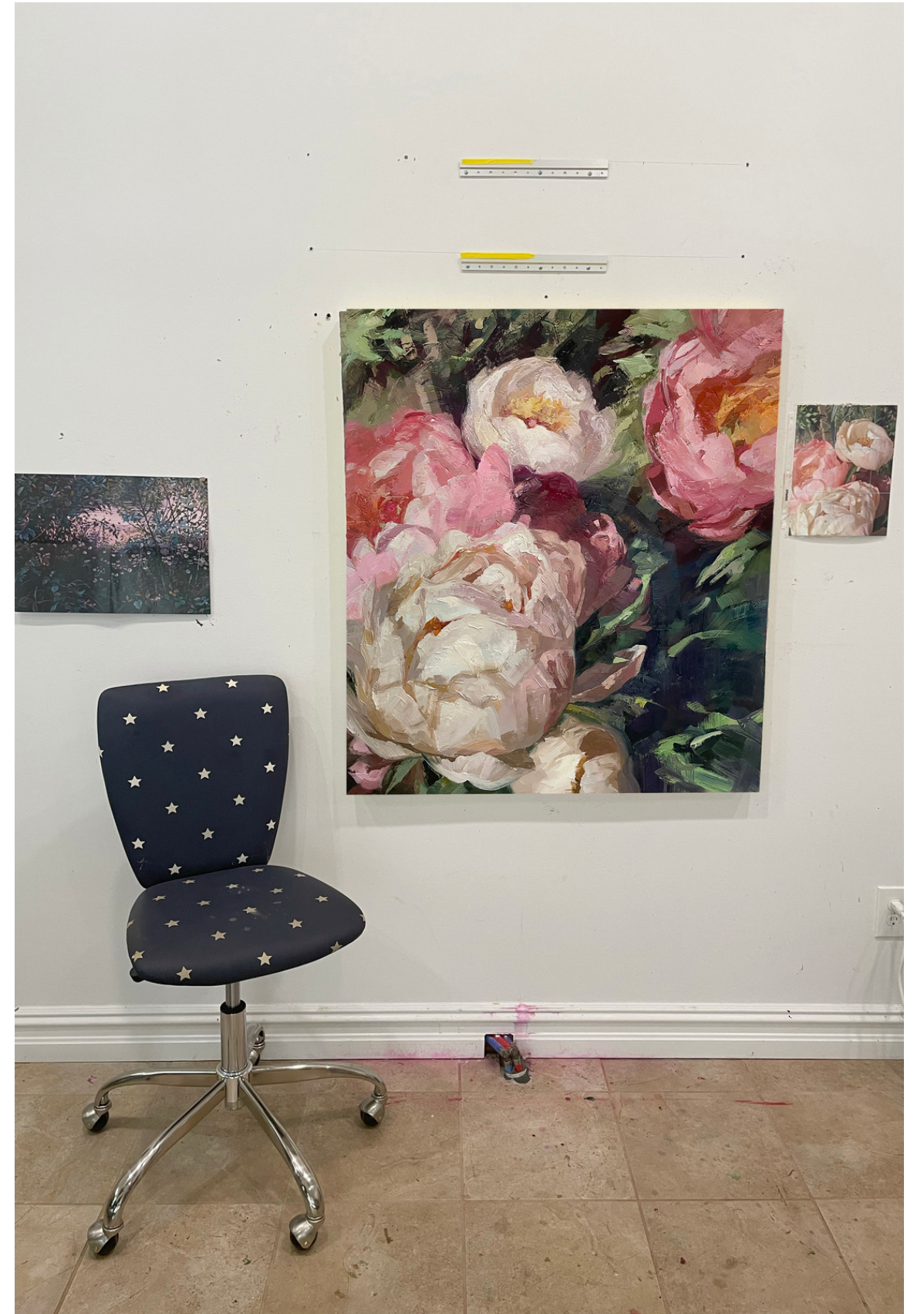
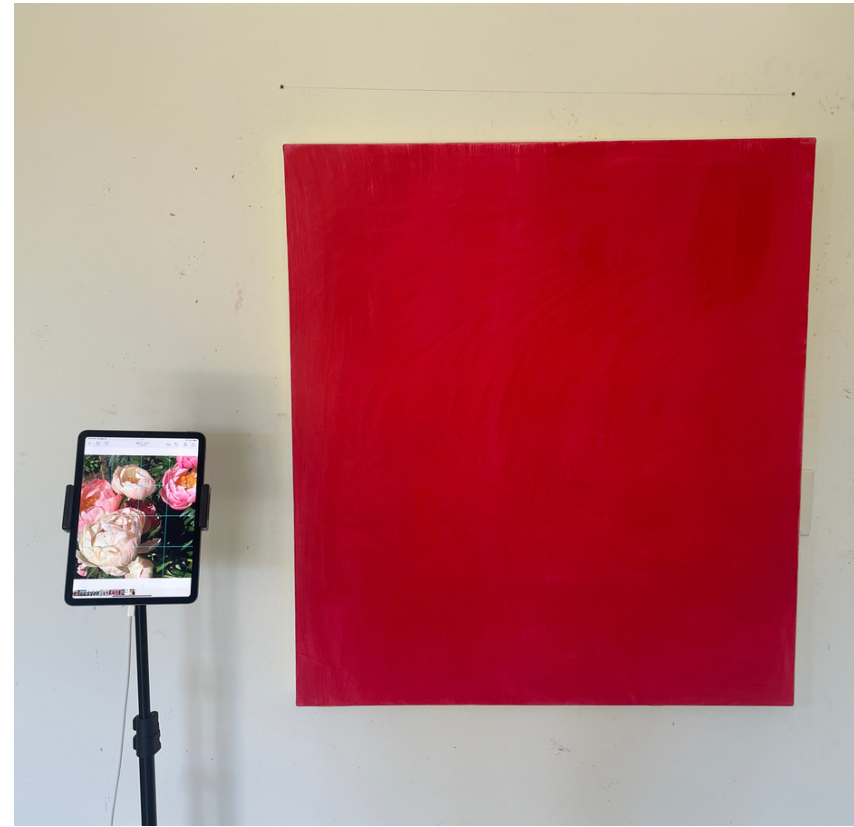
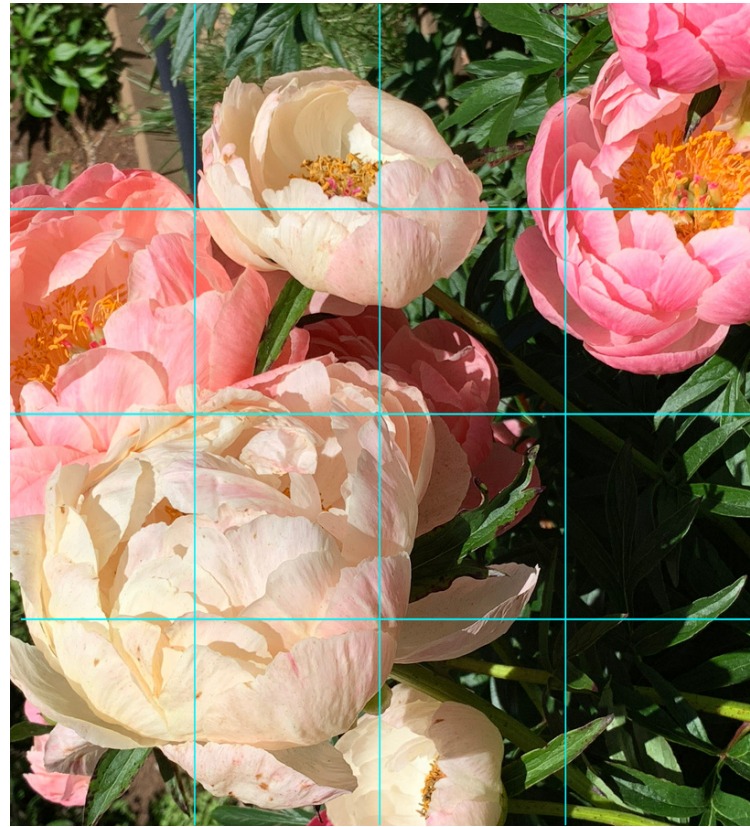
Some artists can start with a blank canvas shaping ideas as they go, or going completely abstract. Other artists go completely photo- or hyper-realistic, using the reference as the exact guideline.

I am between these two extremes. I need to have a reference image to get started. I usually deviate from it and I never stick to it exactly.

The reference image serves as a springboard to develop new ideas and methods.



# Example: Big Peonies



# Learning to Expand



# Example: Joan

This is an example of an exploration of the painting “Joan”, 36 x 48 inches. Started in October 2021, it was finished in September 2022.



Photo from a model photoshoot, 2017.

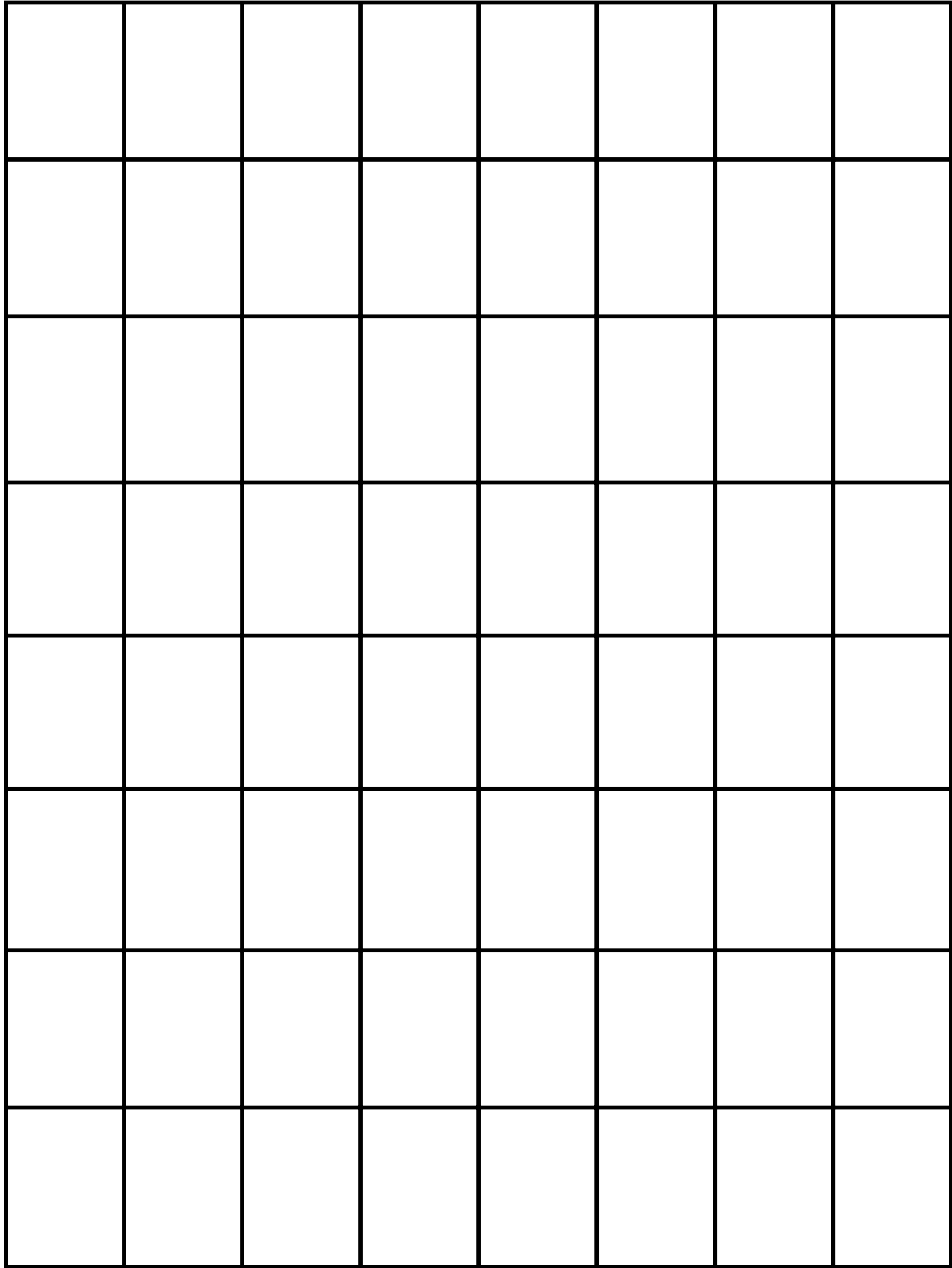
### Ratio and Proportions

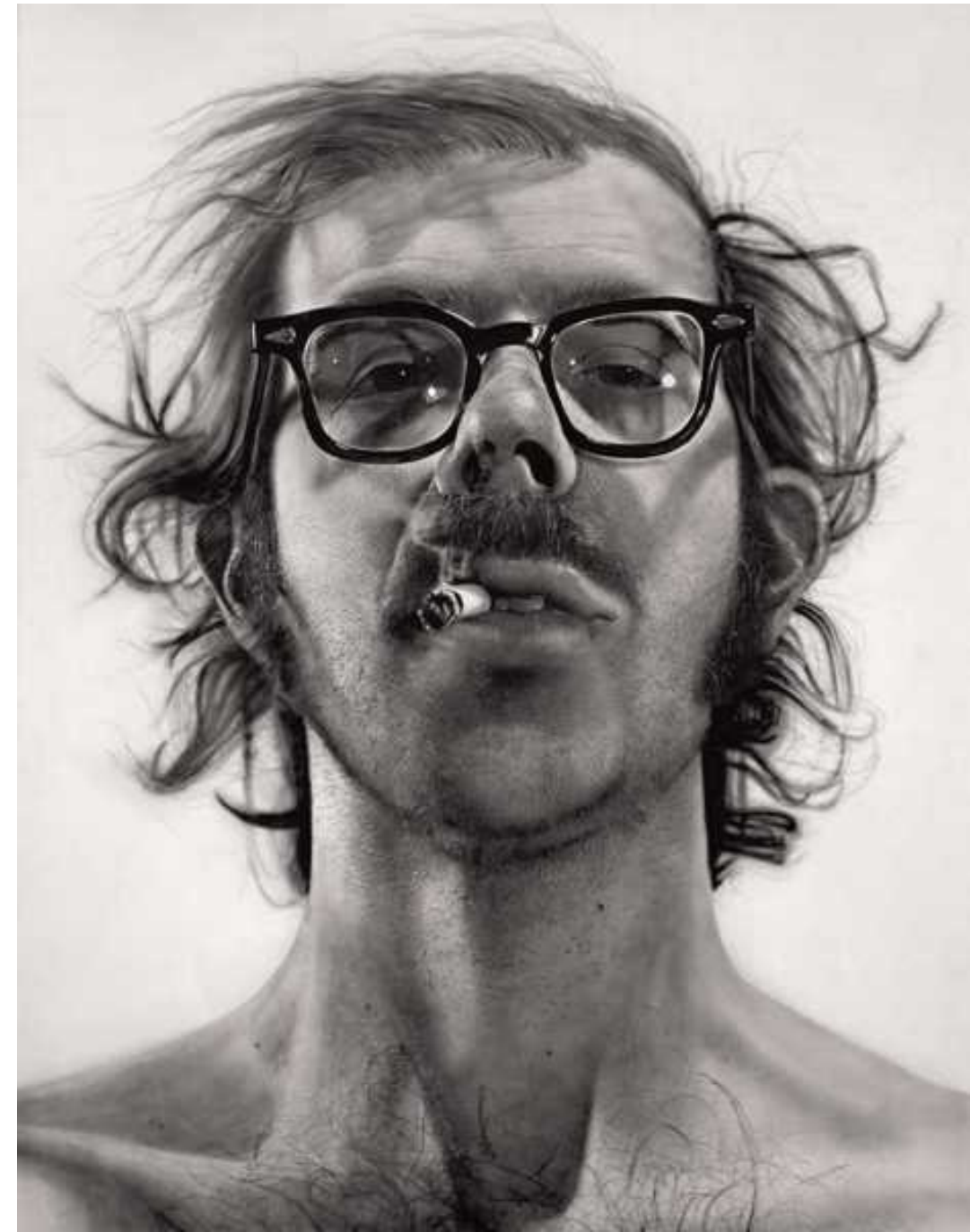
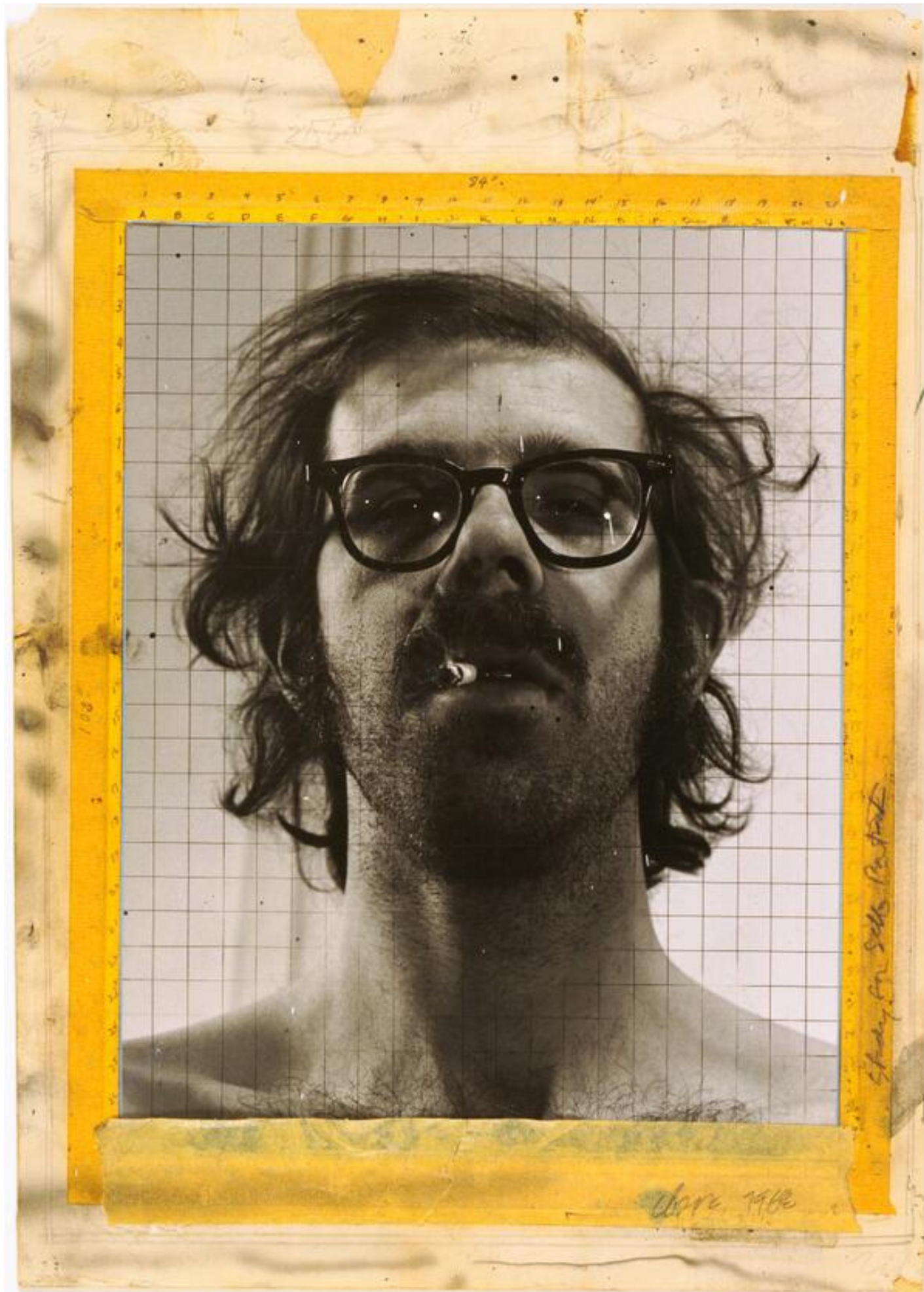
This is the point when I designed the proportion of the figure to the canvas. I set the canvas size to be 36 x 48 inches, and calculated how large the head will be.



### Grid as a Transfer Method

I use the grid to help me transfer the image to the large canvas. I use a 4 x 4 grid for smaller paintings, and an 8 x 8 grid for larger ones.



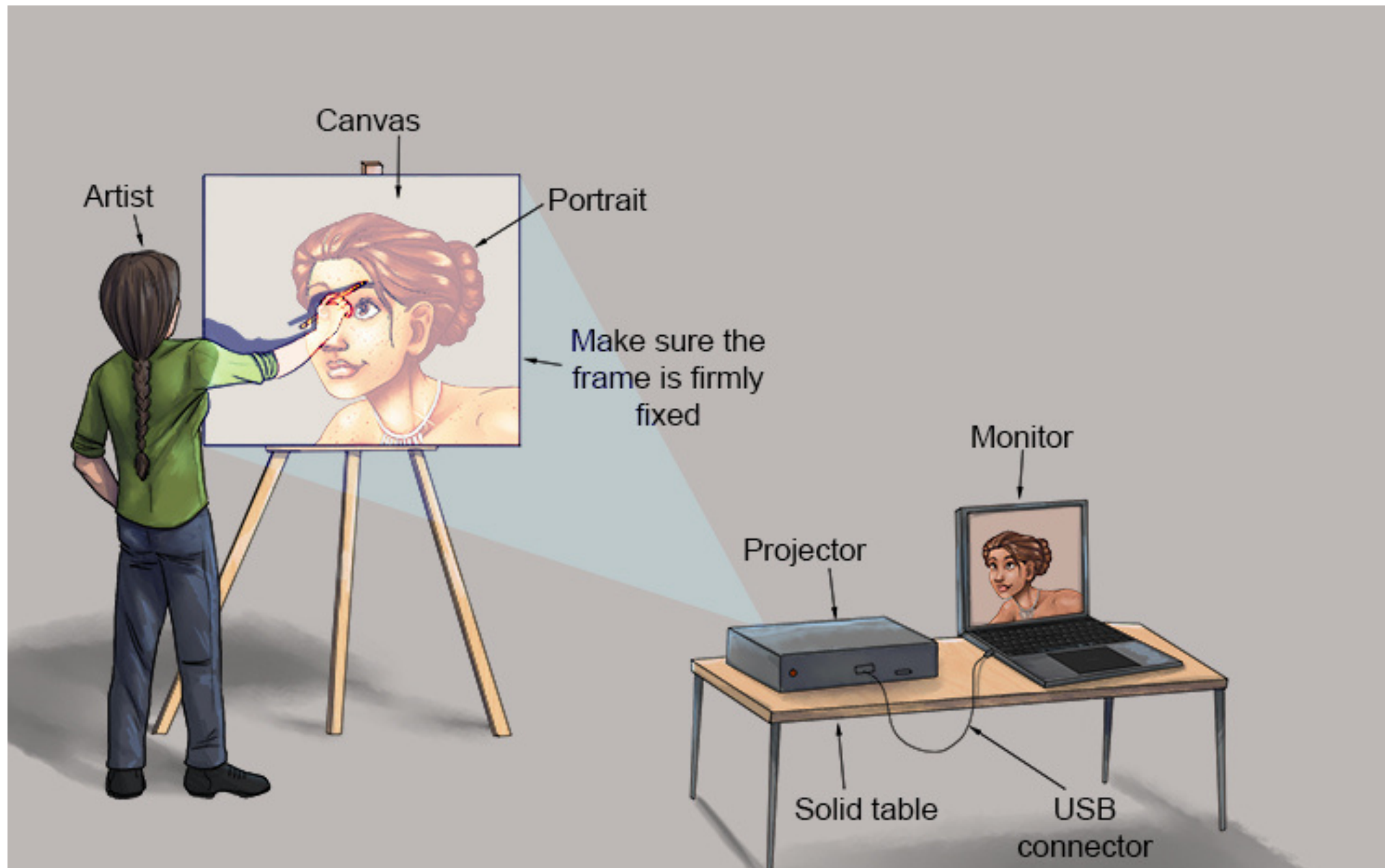


Chuck Close  
'Big Self Portrait', (1967-68)

# Other Transfer Methods

Using a Projector:

You can literally project the image onto your canvas, and trace it using either a pen, pencil or paint.



# Other Transfer Methods

Trace a Printed Image:

Print the image at size at Staples, FedEx or a similar provider.

Place transfer paper (also known as graphite paper or carbon paper) on the canvas with the graphite side facing down.

Secure both the printed image and the transfer paper in place with tape along the edges to prevent any movement during the transfer process.

With the printed image and transfer paper securely in place, trace the outlines of the image onto the canvas using a pen or stylus.



Source: etsy.com - TopCraftDIY

Alternatively, if you prefer to transfer using paint, print the image on sturdier paper.

Apply a thin layer of inexpensive oil paint on the backside of the printed image, covering the areas where you want the image to transfer onto the canvas.

Press the painted side of the image onto the canvas, ensuring it is aligned correctly. Gently rub over the surface of the image to transfer the paint onto the canvas. Use a stylus to draw lines.

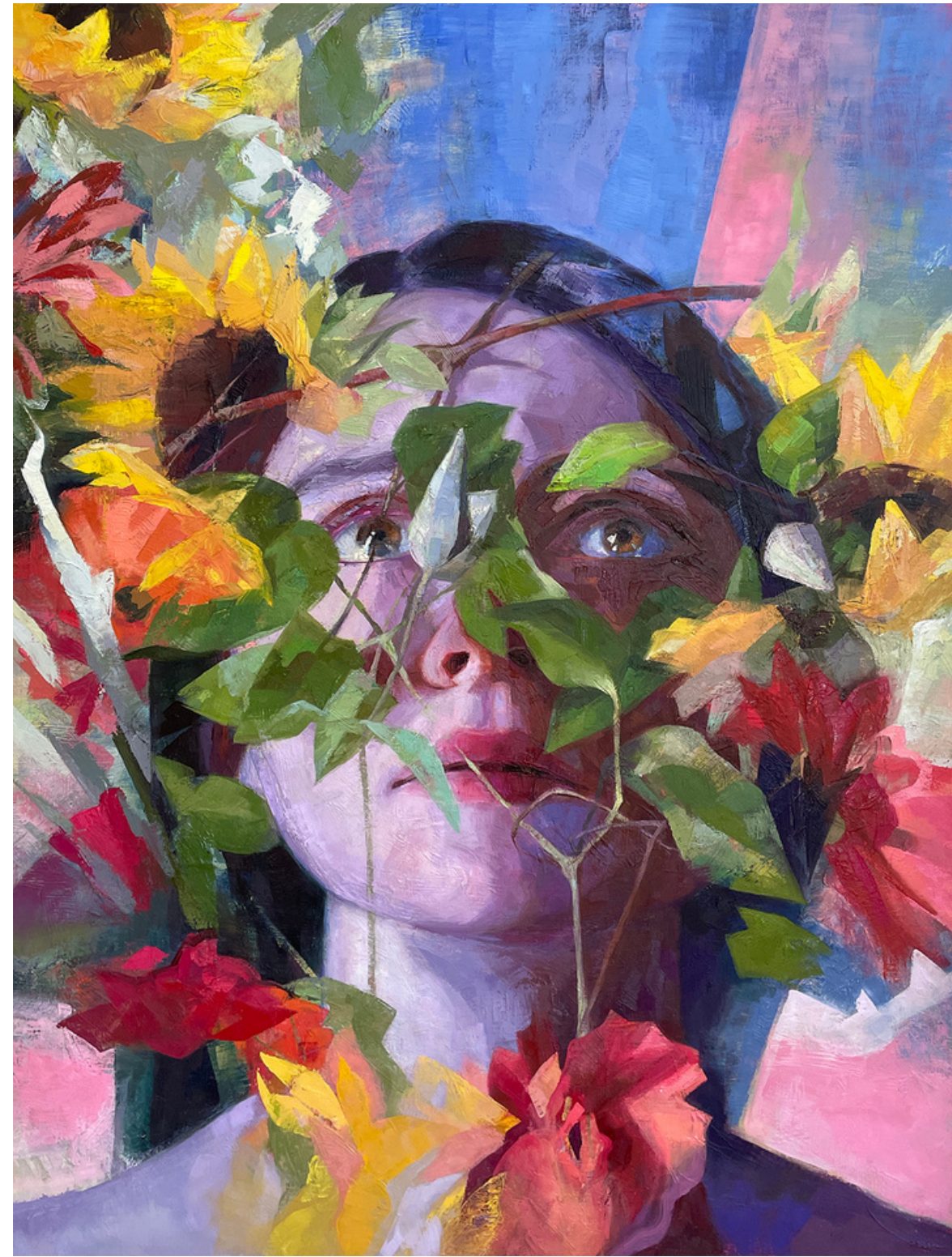
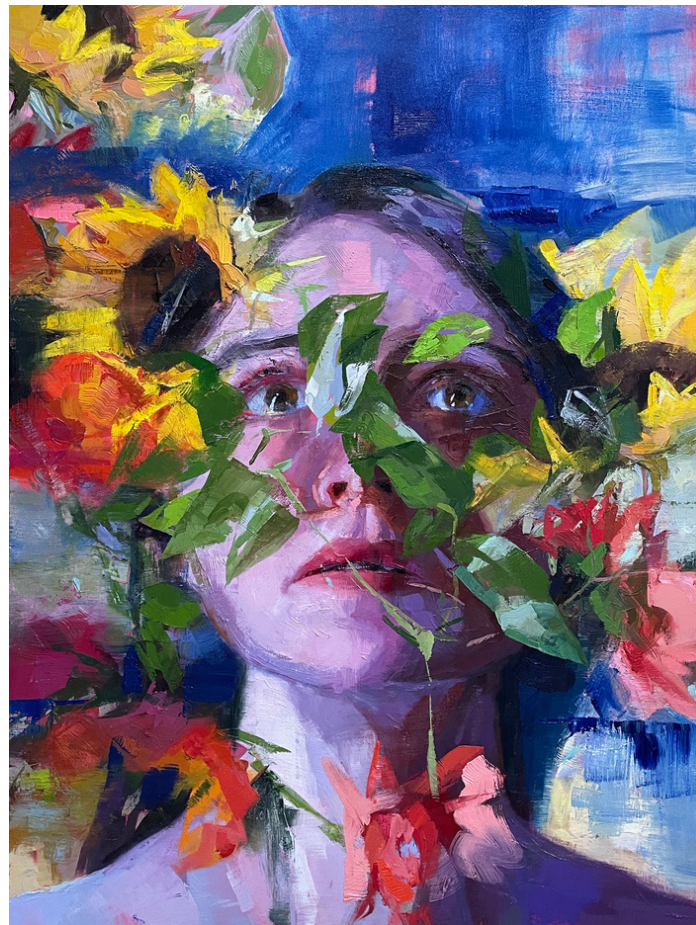
Carefully peel off the printed image to reveal the transferred outlines on the canvas.

# My Under-Drawing

I prefer the freehand drawing method. I always draw with a brush and oil paint, using Gamsol as thinner.







Continuous purposeful pentimenti  
Looking, searching, making "mistakes"

# Mindset is Everything

Painting large is a true test for you as an artist. You really have to be in it to win it. Some aspects of it are:

**Endurance:** Large oil paintings often require extended periods of concentration and physical effort. Being mentally prepared helps artists maintain focus and stamina throughout the painting process, preventing fatigue and ensuring consistent progress.

**Patience:** Large-scale artworks can take weeks or even months and years to complete. Being mentally prepared helps artists approach the painting with patience, understanding that each brushstroke contributes to the overall vision and quality of the piece.

**Problem-solving:** Large paintings present unique challenges, such as managing proportions, composition, and color harmony on a grand scale. Being mentally prepared equips artists with the resilience and adaptability needed to overcome obstacles and find creative solutions to complex problems.

**Confidence:** Large paintings can be intimidating due to their size and scope. Being mentally prepared instills confidence in artists, empowering them to tackle ambitious projects with self-assurance and a positive mindset.